

Redmi Buds 4 User Manual



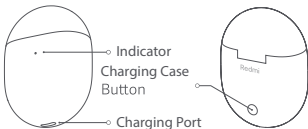
Redmi

Read this manual carefully before use, and retain it for future reference.

Illustrations of product, accessories, and user interface in the user manual are for reference purposes only. Actual product and functions may vary due to product enhancements.

Product Overview

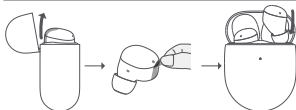
Charging Case



Earbuds



First-time Use



1. Open the lid and take out earbuds.
2. Remove the protective film.
3. Put both earbuds into the charging case.
Close and then open the lid to start pairing.

Wearing



- Gently place the earbud into your ear canal, then adjust it to a comfortable position.
- During calls, make sure to point the talk microphone towards your mouth for clearer calls.

Note: The M-size ear tips are preinstalled. If feeling uncomfortable, please change to size L or S for a better fit.

Charging

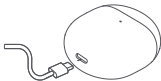
Charging the earbuds

When the earbuds are placed in the charging case, they will automatically start charging.

Note: After using the earbuds, place them back into the charging case. This will extend their service life and helps to avoid losing or misplacing them.

Charging the charging case

Use the Type-C charging cable to charge both the earbuds and the charging case. The charging case indicator remains white while charging, and turns off when fully charged.



Turning On

Make sure the charging case is not out of battery with earbuds in it. Open the lid of the charging case, and the earbuds will automatically turn on.

Turning Off

- Make sure the charging case is not out of battery. Put both earbuds back into the charging case and close the lid, they will automatically disconnect and start charging, and automatically turn off once fully charged.
- When turned on and out of the charging case, the earbuds will automatically turn off after about 1 hour if remaining disconnected from the device without any operations (such as being worn on or put back into the case).

Connection

First time connection

When using for the first time, put both earbuds into the charging case and close the lid. Open the lid again and the charging case indicator will blink white slowly for about 1 minute. During this period, enable the Bluetooth function on your phone, and then search and tap "Redmi Buds 4" to connect the earbuds. If the earbuds are connected successfully, the charging case indicator will turn off after 7 seconds; otherwise, it will turn off automatically after blinking slowly for 1 minute.

Note: If the earbuds cannot be connected, close and open the lid and then repeat the above operation.

Connecting to other devices

Make sure the charging case is not out of battery and then place both earbuds in the case. Keep the lid open, and press and hold the charging case button for 2 seconds until the charging case indicator starts blinking. Now you can search and connect with the earbuds on a new device.

When the earbuds are connected, any previously paired device can select and reconnect with the earbuds from its pairing records. Once reconnected, the earbuds will disconnect from the current device it is already paired with.

Automatic connection

When the earbuds are in the charging case, opening the lid of the charging case will automatically connect the earbuds to the most recently used Bluetooth device. If the earbuds cannot successfully connect to any Bluetooth device, they will automatically enter the low-power consumption mode.

Disconnected

When the earbuds are connected to a device, if the device's Bluetooth is disabled, the device is too far to be connected to, or both earbuds are in the charging case with the lid closed, the earbuds will disconnect from the device.

Restoring Factory Settings

1. Place the earbuds into the charging case.

2. Methods :

Method 1: Close the charging case lid. Press and hold the charging case button for about 10 seconds until the charging case indicator stays on for about 3 seconds and then turns off.

Method 2: Open the charging case lid. Press and hold the charging case button for about 10 seconds until the charging case indicator stays on for about 3 seconds and then blinks slowly.

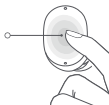
The earbuds are restored to the factory settings. The connection history has been cleared and the earbuds are waiting for a connection.

Note: Due to the technical characteristics of Bluetooth, there may be occasional intermittent loss of connection or sound in areas with dense electromagnetic signal interference at 2.4 GHz.

Function Overview

Note: Once the weather is cold outdoors and your hands become dry, the earbuds may not function when touching them.

Multi-function
Touch Area



During calls

Double-tap: Answer a call

Triple-tap: Decline or end a call

Music

Double-tap: Pause or play

Triple-tap: Play next track

Take out either earbud: Pause music/Wear the earbud back within 120 seconds to resume playing

Noise cancellation mode/Transparency mode

When wearing both earbuds, press and hold either earbud to switch between: Noise cancellation mode <> Transparency mode

How to Use the App

The built-in function can be used with the app after the earbuds are connected to the phone via Bluetooth. Scan the QR code below to download the app.



Connecting with the app

Quick connection

1. Download and open the app.
2. Place the earbuds into the charging case and close its lid. Ensure the phone is unlocked and its Bluetooth is enabled, and hold it close to the charging case. Open the charging case lid and follow the instructions on the phone to connect the earbuds.

Note: Once connected, you can use the app to update the firmware of the earbuds.

Examples of frequently used functions

Once connected with the app for phones, press and hold the multi-function touch area on either earbud (in the app, set the "press and hold" as waking up the voice assistant) to activate the AI voice assistant to assist you in completing tasks by voice.

- Set an alarm for 8:00 tomorrow morning.
- Pause .
- Please speak louder.
- What's the weather like today?
- How do I speak "thank you" in French?

Maintenance:

- To maintain optimum sound quality, we recommend cleaning the ear tips of the wireless headphones regularly.

This process can easily be done by removing the earpieces and then cleaning both earpieces with a cotton swab dipped in lukewarm water. Another cotton bud can be used to dry them. It is recommended to perform this procedure after each use or after an hour of listening to maintain cleanliness and an optimal listening experience.

- When not in use, store the headphones in the charging case and keep them at room temperature and in a humidity-free environment.

- Fully charge the headphones at least once every 6 months to maintain good battery condition.

Specifications

Name: Wireless Earphones

Model: M2137E1

Frequency Band: 2402–2480 MHz

Max RF Output Power: < 20 mW

Storage Temperature: 0 °C to 45 °C

Operating Temperature: 0 °C to 45 °C

Earbuds

Wireless Range:

10 m (in an obstacle-free environment)

Input: 5 V = 100 mA

Wireless Connectivity: Bluetooth ® 5.2

Charging Case

Model: M2137E1

Charging Port: Type-C


Battery Capacity: 620 mAh

Input: 5 V = 450 mA

Output: 5 V = 240 mA

Important Safety Information

- The product has a built-in battery that can not be removed or replaced. To avoid damage to the battery or the product, do not disassemble or modify the battery by yourself. The battery can only be replaced by the authorized service providers and must be replaced with the same type. Replacement of a battery with an incorrect type may defeat a safeguard (such as catching fire, explosion and leakage of corrosive electrolyte). Do not dispose of used batteries with household waste. Disposal of this product and the used batteries shall comply with local laws and regulations.
- Do not attempt to disassemble, repair or modify the product, as this may cause fire or even completely damage the product.
- Keep the product's indicator away from the eyes of children and animals while the product is in use.
- Do not disassemble, puncture or crush the product nor expose it to fire.
- Please stop using the product immediately and seek medical assistance if the contact area on your skin shows signs of redness or swelling.

-  To prevent possible hearing loss, do not use high volume for long periods of time.
- This product is not a toy and may contain small parts. Please keep them out of the reach of children.
- Disposal of a battery into fire or a hot oven or water or other liquids or mechanically crushing or cutting of a battery, that can result in an explosion.
- Leaving a battery in an extremely high temperature surrounding environment that can result in an explosion or the leakage of flammable liquid or gas.
- A battery subjected to extremely low air pressure that may result in an explosion or the leakage of flammable liquid or gas.
- Product information and certification marks are located in the Charging Case.
- = The symbol indicates DC voltage.

The Bluetooth ® word mark and logos are registered trademarks owned by Bluetooth SIG, Inc. and any use of such marks by Xiaomi Inc. is under license. Other trademarks and trade names are those of their respective owners.



EU DECLARATION OF CONFORMITY

Hereby, Chongqing Qianxing Technology Co., Ltd. declares that the radio equipment type M2137E1 is in compliance with Directive 2014/53/EU. The full text of the EU declaration of conformity is available at the following internet address:
<http://www.mi.com/global/service/support/declaration.html>



Hereby, Chongqing Qianxing Technology Co., Ltd. declares that the radio equipment type M2137E1 is in compliance with Radio Equipment Regulations 2017. The full text of the UKCA declaration of conformity is available at the following internet address:
<https://www.mi.com/uk/service/support/declaration.html>



WEEE Information

All products bearing this symbol are waste electrical and electronic equipment (WEEE as in directive 2012/19/EU) which should not be mixed with unsorted household waste.

Instead, you should protect human health and the environment by handing over your waste equipment to a designated collection point for the recycling of waste electrical and electronic equipment, appointed by the government or local authorities. Correct disposal and recycling will help prevent potential negative consequences to the environment and human health. Please contact the installer or local authorities for more information about the location as well as terms and conditions of such collection points.



This device complies with part 15 of the FCC Rules. Operation is subject to the following two conditions: (1) This device may not cause harmful interference, and (2) this device must

accept any interference received, including interference that may cause undesired operation. Any Changes or modifications not expressly approved by the party responsible for compliance could void the user's authority to operate the equipment.

Note: This equipment has been tested and found to comply with the limits for a Class B digital device, pursuant to part 15 of the FCC Rules. These limits are designed to provide reasonable protection against harmful interference in a residential installation. This equipment generates uses and can radiate radio frequency energy and, if not installed and used in accordance with the instructions, may cause harmful interference to radio communications. However, there is no guarantee that interference will not occur in a particular installation. If this equipment does cause harmful interference to radio or television reception, which can be determined by turning the equipment off and on, the user is encouraged to try to correct the interference by one or more of the following measures:

- Reorient or relocate the receiving antenna.
- Increase the separation between the equipment and receiver.
- Connect the equipment into an outlet on a circuit different from that to which the receiver is connected.

-Consult the dealer or an experienced radio/TV technician for help.

This equipment complies with FCC/ISED radiation exposure limits set forth for an uncontrolled environment. End user must follow the specific operating instructions for satisfying RF exposure compliance. This transmitter must not be co-located or operating in conjunction with any other antenna or transmitter.

- The portable device is designed to meet the requirements for exposure to radio waves established by the ISED. These requirements set a SAR limit of 1.6 W/kg averaged over one gram of tissue.

This device contains licence-exempt transmitter(s)/ receiver(s) that comply with Innovation, Science and Economic Development Canada's licence-exempt RSS(s). Operation is subject to the following two conditions:

1. This device may not cause interference.
2. This device must accept any interference, including interference that may cause undesired operation of the device.

FCC ID: 2AW4L-M2137E1

IC: 26401-M2137E1

CAN ICES-003(B)/NMB-003(B)

Warranty Notice

As a Xiaomi consumer, you benefit under certain conditions from additional warranties. Xiaomi offers specific consumer warranty benefits which are in addition to, and not instead of, any legal warranties provided by your national consumer law. The duration and conditions related to the legal warranties are provided by respective local laws. For more information about the consumer warranty benefits, please refer to Xiaomi's official website <https://www.mi.com/en/service/warranty/>. Except as prohibited by laws or otherwise promised by Xiaomi, the after-sales services shall be limited to the country or region of the original purchase. Under the consumer warranty, to the fullest extent permitted by law, Xiaomi will, at its discretion, repair, replace or refund your product. Normal wear and tear, force majeure, abuse or damage caused by the user's negligence or fault are not warranted. The contact person for the after-sale service may be any person in Xiaomi's authorized service network, Xiaomi's authorized distributors or the final vendor who sold the products to you. If in doubt please contact the relevant person as Xiaomi may identify.

Products which were not duly imported and/or were not duly manufactured by Xiaomi and/or were not duly acquired from Xiaomi or a Xiaomi's official seller are not covered by the present warranties. As per applicable law you may benefit from warranties from the non-official retailer who sold the product. Therefore, Xiaomi invites you to contact the retailer from whom you purchased the product.

Complies With
IMDA Standards
DB106135

80848/SDPPI/2022
9003



Manufactured for:

Xiaomi Communications Co., Ltd.

Manufactured by:

Chongqing Qianxing Technology Co., Ltd.
(a Mi Ecosystem company)

Address: No. 8, Shuangxing Avenue, Biquan
Street, Bishan District, Chongqing Municipality,
China

For further information, please go to
www.mi.com User Manual Version: V1.0

Importer:

Beryko s.r.o.

Pod Vinicemi 931/2, 301 00 Plzeň

www.beryko.cz